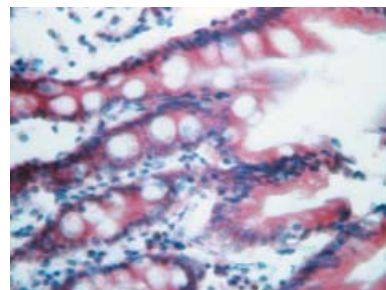
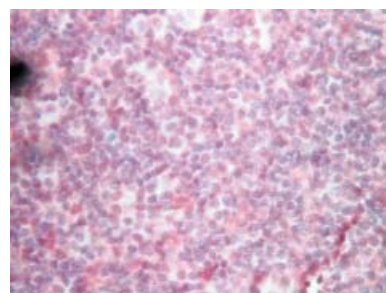


## Apoptosis Antibodies

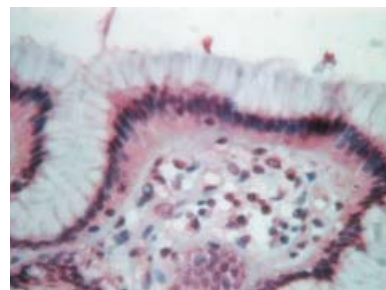
Product	Species	Applications	Catalog #
Anti-Apaf-1 (CT)	h	WB	28054
Anti-Apaf-1 (NT)	h, m, r	WB	28055
Anti-ARC (CT)	h	WB	28084
Anti-ARC (NT)	h, m, r	WB	28085
Anti-CAD/DFF40 (CT)	m	WB	28034
Anti-CAD/DFF40 (I17)	m, r	WB	28035
Anti-Casp 7	h	WB, IHC	29556
Anti-Casp 8	h	WB, IHC	29557
Anti-Casp 9	h	WB, IHC	29558
Anti-Casp 10/FLICE2 (CT)	h, m, r	WB	28049
Anti-Casp 12 (IN)	h, m, r	WB, IHC	28050
Anti-Casp 12 (NT)	h, m, r	WB	28051
Anti-Casp 13/ERICE	h, m, r	WB	28052
Anti-CD3	h	IHC	29588
Anti-CD5	h	IHC	29589
Anti-CD8	h	IHC	29590
Anti-CD20	h	IHC	29587
Anti-CD79a	h	IHC	29560
Anti-CD95/Fas	h	IHC	29561
Anti-CD117	h	IHC	29562
Anti-D4-GDI	h	WB, IHC	29563
Anti-mSurvivin/TIAP (CT)	m	WB, IHC	28095
Anti-Smac/DIABLO (CT)	h, m, r	WB	28091



*Anti-CD95/Fas (Cat# 29561) stained on intestine by IHC Histain Kit-AEC (Cat# 29702).*



*Rabbit Anti-Caspase 7 (Cat# 29556) stained on tonsil by using IHC Histain Kit-AEC (Cat# 29702).*



*Rabbit Anti-mSurvivin/TIAP (CT) (Cat# 28095) stained on stomach by using IHC Histain Kit-AEC (Cat# 29702).*

### Key

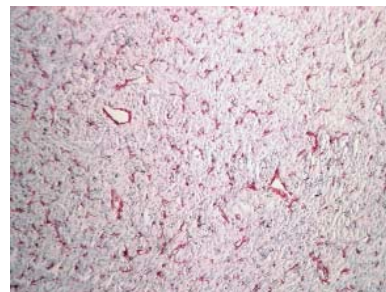
**Species:** bovine (b), human (h), mouse (m), rat (r)

**Applications:** Western Blot (WB), Immunoprecipitation (IP), Immunohistochemistry (IHC)

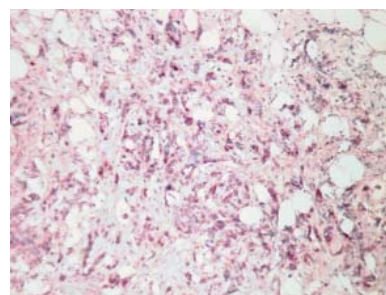
\*Antibodies available in 100 µg/vial.

## Cancer Research Antibodies

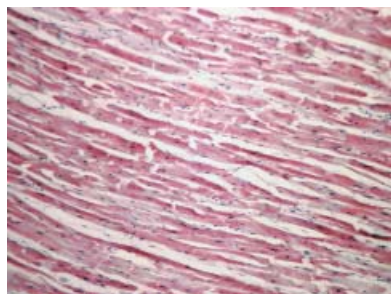
Product	Species	Applications	Catalog #
Anti-Actin, smooth muscle	h	IHC	29553
Anti-ALK/p80	h	IHC	29584
Anti- $\beta$ -Amyloid	h	WB, IHC	28182
Anti- $\beta$ -Catenin	h	WB, IP, IHC	29554
Anti-Cadherin pan	h	IHC	29569
Anti-Calcitonin	h	IHC	29555
Anti-Calretinin	h	IHC	29586
Anti-C-erbB-2	h	IHC	29559
Anti-Chromogranin A	h	IHC	29591
Anti-Cytochrome C	h	IHC	28184
Anti-Desmin	h, m, r	IHC	29593
Anti-EGFR	h	WB, IHC	29564
Anti-ER	h	WB, IHC	29595
Anti-ER-alpha (Paired167), non-phospho-specific	h	WB	28002
Anti-ER-beta (IN)	h, m, r	WB, IP, IHC	28003



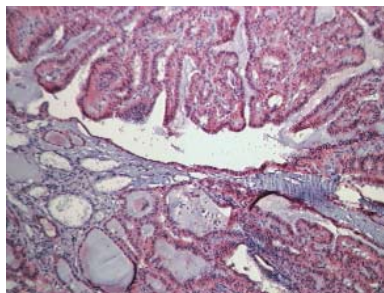
Rabbit Anti-Actin, smooth muscle (Cat# 29553) stained on leiomyoma by using IHC Histain Kit-AEC (Cat# 29702).



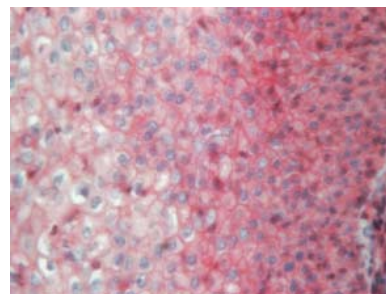
Rabbit Anti- $\beta$ -Catenin (Cat# 29554) stained on breast ca by using the IHC Histain Kit-AEC (Cat# 29702).



Rabbit Anti-Cytochrome C (Cat# 28184) stained on heart tissue by using IHC Histain Kit-AEC (Cat# 29702).



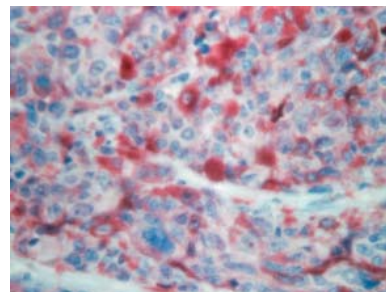
Anti-Calcitonin (Cat# 29555) stained on thyroid by using IHC Histain Kit-AEC (Cat# 29702).



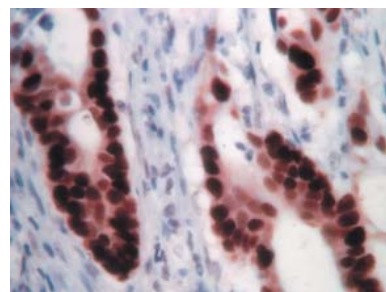
Rabbit Anti-Cadherin pan (Cat# 29569) stained on tonsil by using IHC Histain Kit-AEC (Cat# 29702).

## Cancer Research Antibodies (cont.)

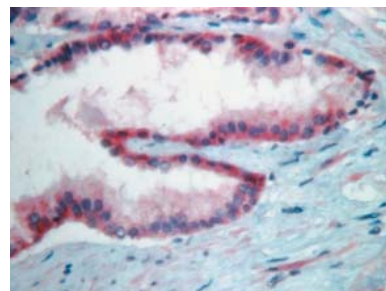
Product	Species	Applications	Catalog #
Anti-Heregulin	h	WB, IHC	29566
Anti-MAGE (IN)	h	WB, IHC	28004
Anti-MMP-1	h	WB	29574
Anti-MMP-2	h, m, r	WB	29575
Anti-MMP-3	h	WB	29576
Anti-MMP-7	h	WB	29577
Anti-MMP-8	h	WB	29578
Anti-MMP-9	h	WB	29579
Anti-MMP-10	h	WB	29580
Anti-MMP-16	h	WB	29581
Anti-P53 (CT)	h	IHC	29594
Anti-P53 (pSer 6), phospho-specific	h	WB, IP	28006
Anti-P53 (Paired6), non-phospho-specific	h	WB, IP	28007
Anti-P53 (pSer9), phospho-specific	h	WB	28008
Anti-P53 (Paired9), non-phospho-specific	h	WB	28009
Anti-P53 (pSer15), phospho-specific	h	WB, IP	28010
Anti-P53 (Paired15), non-phospho-specific	h	WB	28011
Anti-PLAP	h	IHC	29598
Anti-PR	h	IHC	29597
Anti-PTEN (CT)	h	IP, WB	28015
Anti-Retinoblastoma	h	WB, IP, IHC	29570
Anti-S100	h	IHC	29571
Anti-Synuclein	h	IHC	28186
Anti-Tau (Cocktail)	h	WB	29582
Anti-VEGF	h	WB	29573



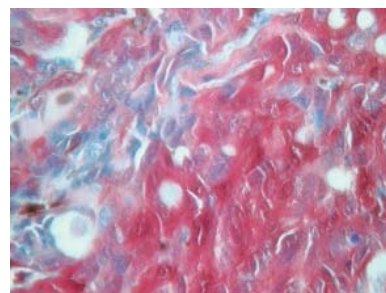
Rabbit Anti-MAGE (IN) (Cat# 28004) stained on melanoma by using IHC Histain Kit-AEC (Cat# 29702).



Rabbit Anti-P53 (CT) (Cat# 29594) stained on colon carcinoma by using the IHC Histain Kit-DAB (Cat# 29700).



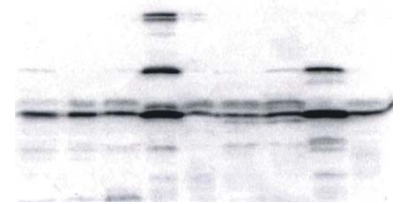
Rabbit Anti-PTEN (CT) (Cat# 28015) stained on prostate ca by using IHC Histain Kit-AEC (Cat# 29702).



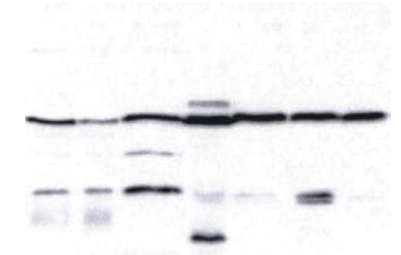
Anti-S100 (Cat# 29571) stained on melanoma by using IHC Histain Kit-AEC (Cat# 29702).

## Signal Transduction Antibodies

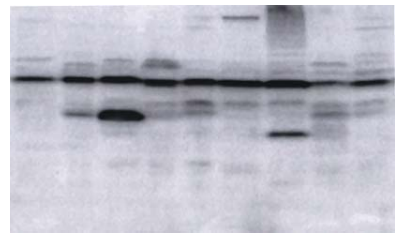
Product	Species	Applications	Catalog #
Anti-AKT1 (pThr308), phospho-specific	h	WB	28103
Anti-AKT1 (Paired308), non-phospho-specific	h	WB	28104
Anti-AKT1 (pSer473), phospho-specific	h	WB	28101
Anti-AKT1 (Paired473), non-phospho-specific	h	WB	28102
Anti-AKT2 (CT)	h, m, r	WB, IP	28105
Anti-AKT3 (IN)	h, m, r	WB, IP	28106
Anti-CIS-1 (IN)	h	WB	28137
Anti-Cyclin D1	h	IHC	29592
Anti-Factor XIIIa	h	WB, IHC	29565
Anti-Ki-67	h	IHC	29567
Anti-NOS (pSer116), phospho-specific	b	WB, IP	28129
Anti-NOS (Paired116), non-phospho-specific	b	WB	28130
Anti-p14ARF	h	WB, IP	29568
Anti-SOCS-1 (CT)	h	WB, IP	28132
Anti-SOCS-2 (CT)	h	WB, IP	28133
Anti-SOCS-3 (CT)	h	WB, IP	28134
Anti-SOCS-4 (IN)	h	WB	28135
Anti-SOCS-5 (CT)	m	WB	28136
Anti-Synaptophysin	h	IHC	29596
Anti-Tgase II	h	WB, IP, IHC	29572



Anti-AKT1 (Paired 308) (Cat# 28104) was analyzed on the cell extracts derived from brain, heart, muscle, liver, spleen, thymus, testes, kidney, and lung, respectively.



Rabbit Anti-AKT1 (Paired 473) (Cat# 28102) was analyzed on cell extracts derived from C2C12, H9C2, Pam212, OVC, Skov3, HeLa, and Rt Brain, respectively.



Anti-AKT2 (CT) (Cat# 28105) was analyzed on cell extracts derived from brain, heart, muscle, liver, spleen, thymus, testes, kidney, and lung, respectively.

## Antibody Reagents and Kits

Product	Catalog #
IHC Histain Kit-DAB	29700
DAB Substrate System	29701
IHC Histain Kit-AEC	29702
AEC Substrate System	29703
Antibody Diluent	29704
Protein A Sepharose 4B	29705
Thiol Sepharose 6B	29706
Sepharose 4B	29707



Extracts of Hepatocyte were incubated with 1 mg/mL of Anti-AKT3 (IN) (Cat# 28106).